

# THE WOODRUFF LIBRARY

## Whats happening in January 2026

270 East Hayne St.  
Woodruff, SC 29388  
(864) 476-8770

**Mon-Tues:**  
10am-8pm

**Wed-Fri:**  
10am-6pm

**Sat:**  
10am-4pm

**Sun:**  
Closed

### STORYTIME

.....  
**Preschool Storytime**  
Wed • 11am



kanopy



LIBBY



SPARTANBURG COUNTY  
PUBLIC LIBRARIES  
[www.spartanburglibraries.org](http://www.spartanburglibraries.org)

### Libraries Closed

All branches of the Spartanburg County Public Libraries will be closed January 1 for New Year's Day. All branches of the Spartanburg County Public Libraries will also be closed on January 19 for Martin Luther King Jr. Day.



Adult Winter  
Reading 2026:  
December 1st -  
January 31st



Adults:  
BINGO!  
Every Tuesday  
at 1pm



6-12 Years:  
Greek Mythology Mini  
Maker  
January 20 at 4pm



Family LEGOs and  
More  
January 26 at 4pm



Homeschool  
It's About Time  
January 12 at 4pm



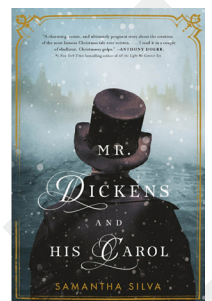
Teens DIY  
Watercolor Snowflake  
Art  
January 8 at 4pm

### Librarian's Note:

The Book Discussion Selection (on display during month of January) is *Klara and the Sun* by Kazuo Ishiguro.

The Book for the Book Discussion on January 7 is *Mr. Dickens and His Carol* by Samantha Silva.

Movie Review Crew - January 14 - *The Man Who Invented Christmas* (2017)



# January 2026

## Events at Woodruff Library

### Adults

Monday, January 5  
4:30pm  
Intro to Journaling

Tuesdays in January  
1pm  
Adult Bingo Bash

Wednesday, January 7  
1pm  
Woodruff Readers Book  
Discussion

Wednesday, January 14  
2pm  
Movie Review Crew

Monday, January 12  
4:30pm  
Bob Ross Workshop

### Teens

Thursday, January 8  
4pm  
Teen DIY: Watercolor  
Snowflake Art

Thursday, January 22  
4pm  
Teens Play: Bingo

Thursday, January 29  
4pm  
Teen Crafternoon: Buttons &  
Stickers

### Kids

Monday, January 12  
2pm  
Homeschool: It's About Time

Tuesday, January 20  
4pm  
Greek Mythology Mini Maker

Monday, January 26  
4pm  
Family LEGOs and More

## Woodruff Maker Lab

Woodruff's newest edition to its Maker Lab is the Epson Archival Scanner – capable of scanning professional large-format scans (12.2" x 17.2"), restore faded color, clarity and detail to old photos, scan multiple images at one time and save files to zip/flash drive.



Other available offerings and features of Woodruff Maker Lab include: basic sewing instruction, embroidery machine, Cricut, lamination equipment, Epson archival scanner, photos from your cellphone, buttons, stickers, and heat press items. Come utilize the equipment. It's here! Give us a call at 864-476-8770 for more information.